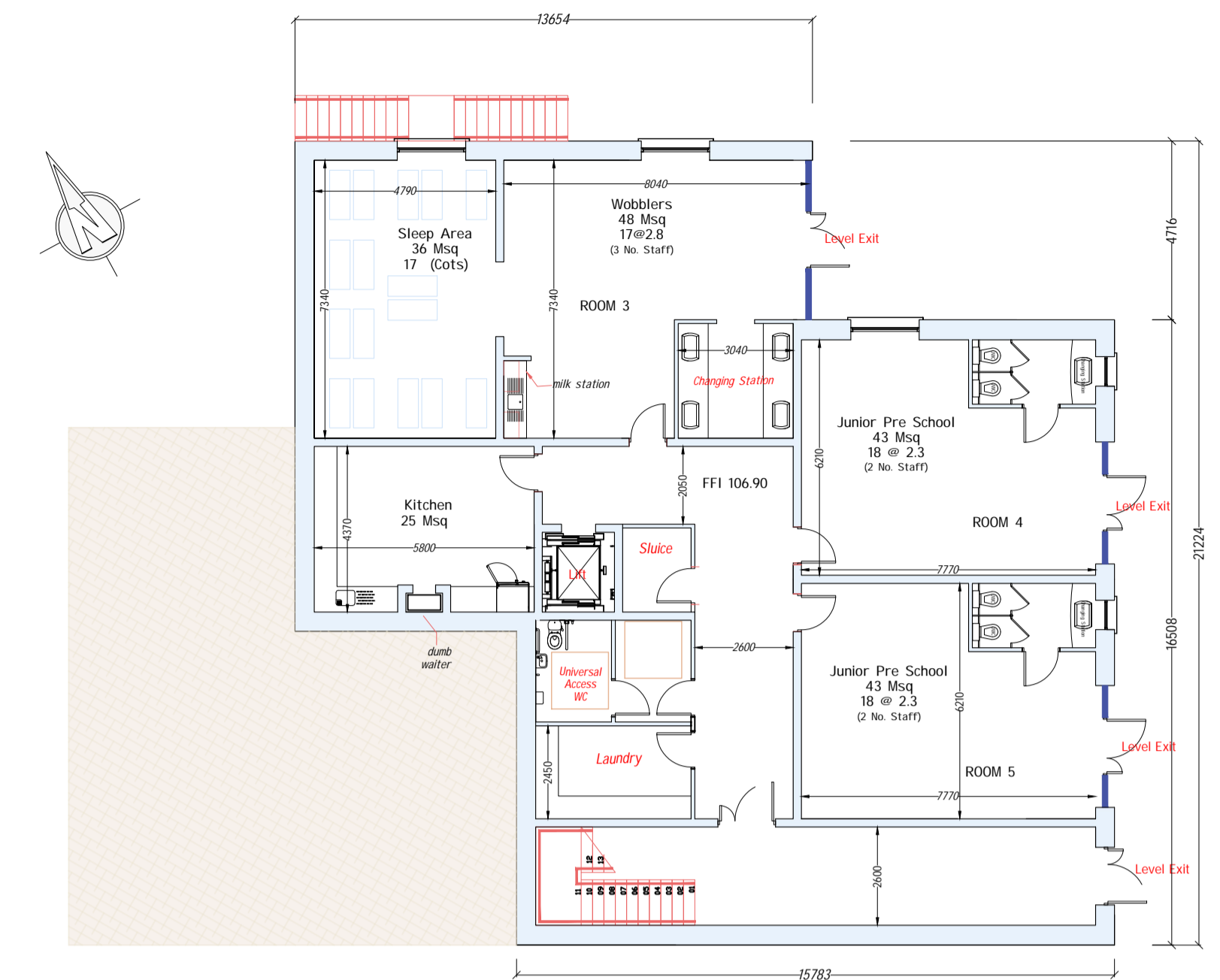


BUILDING MATERIALS ARE SUBJECT TO WEXFORD COUNTY COUNCIL PLANNING COMPLIANCE



<https://www.earlychildhoodireland.ie/regulations-2016/>

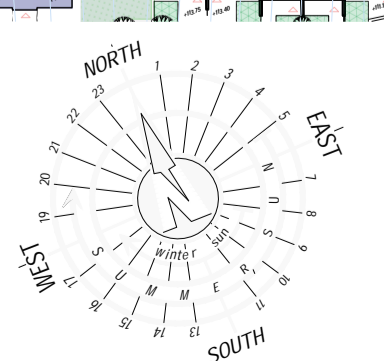
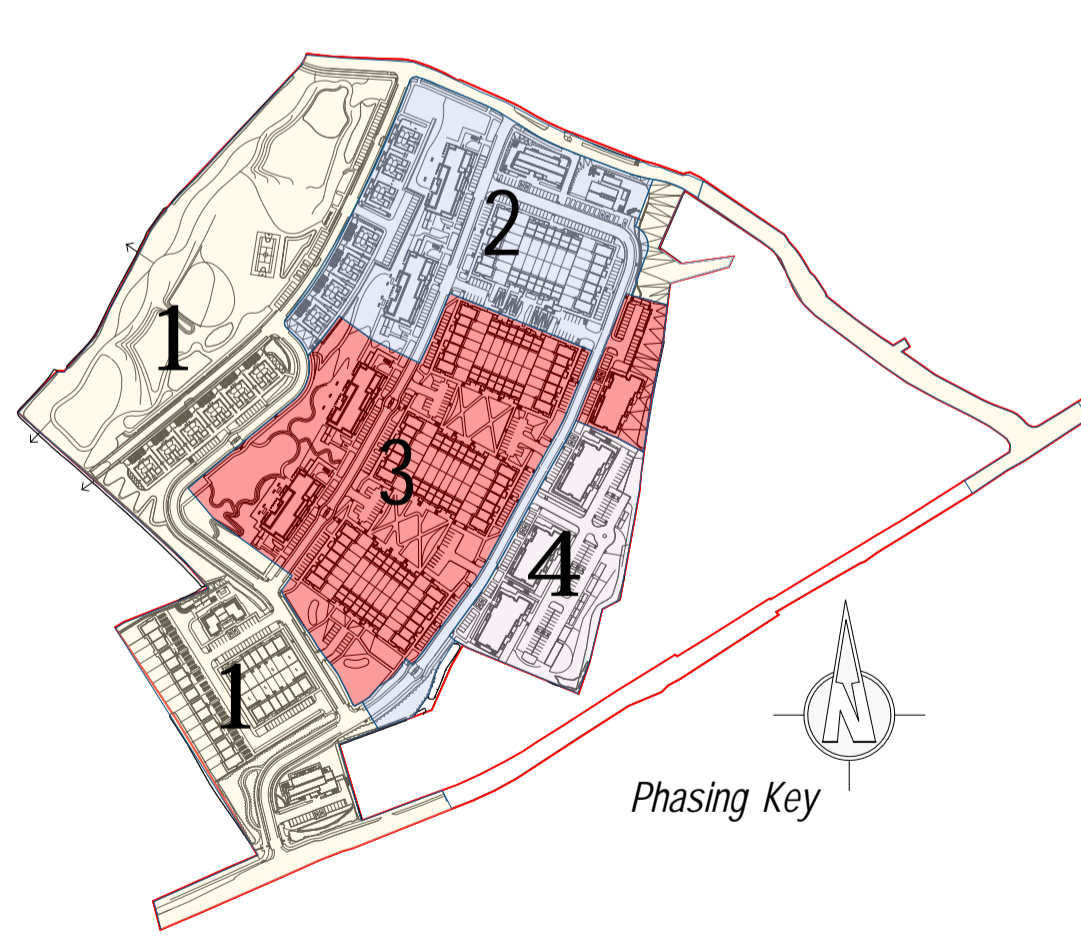
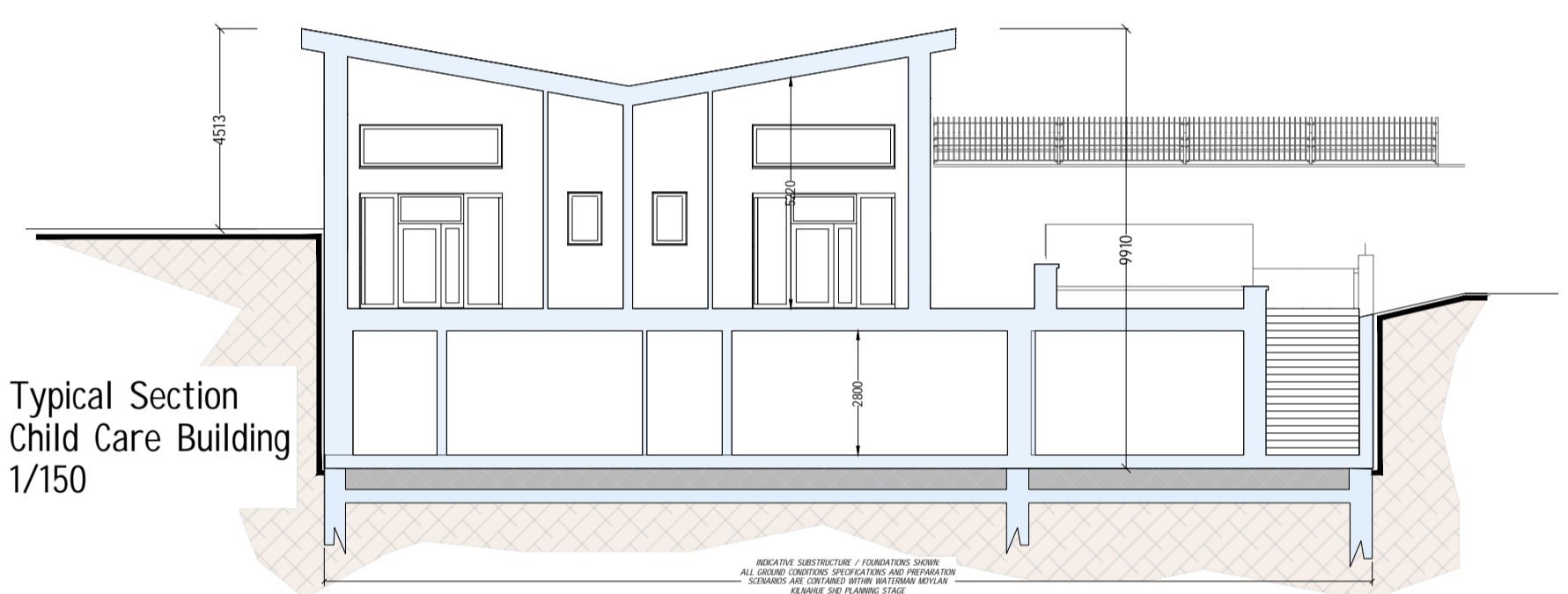
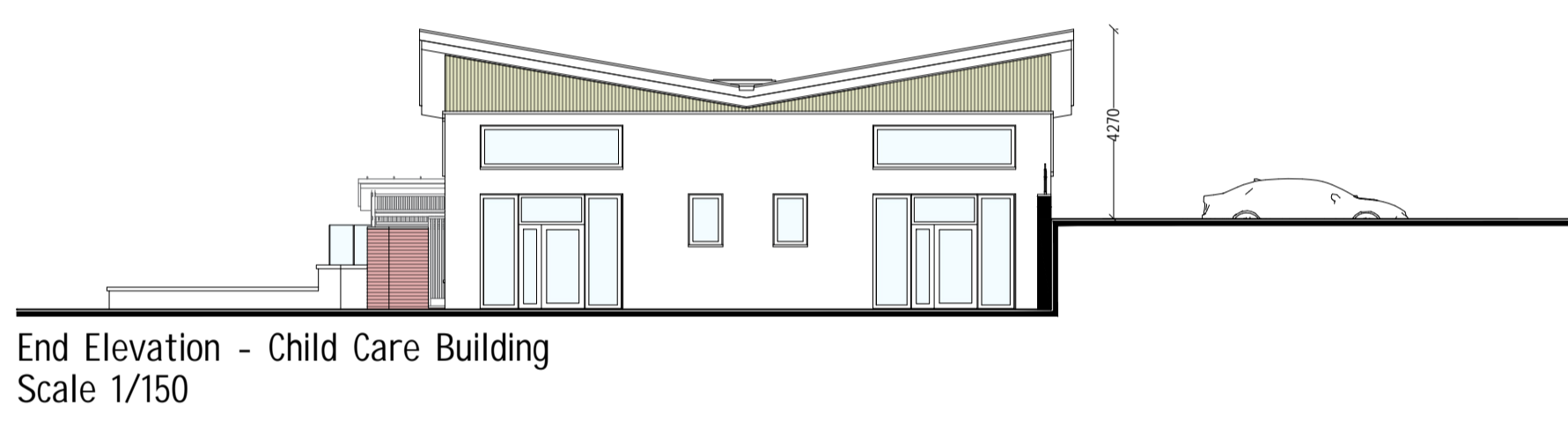
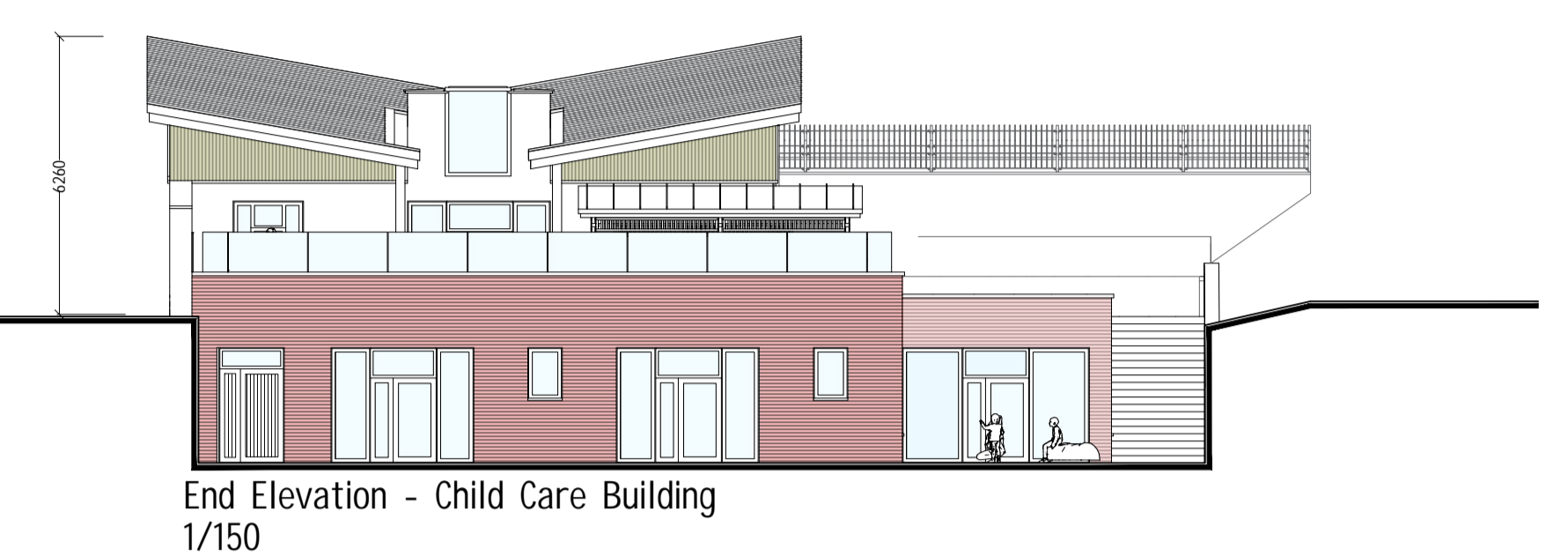
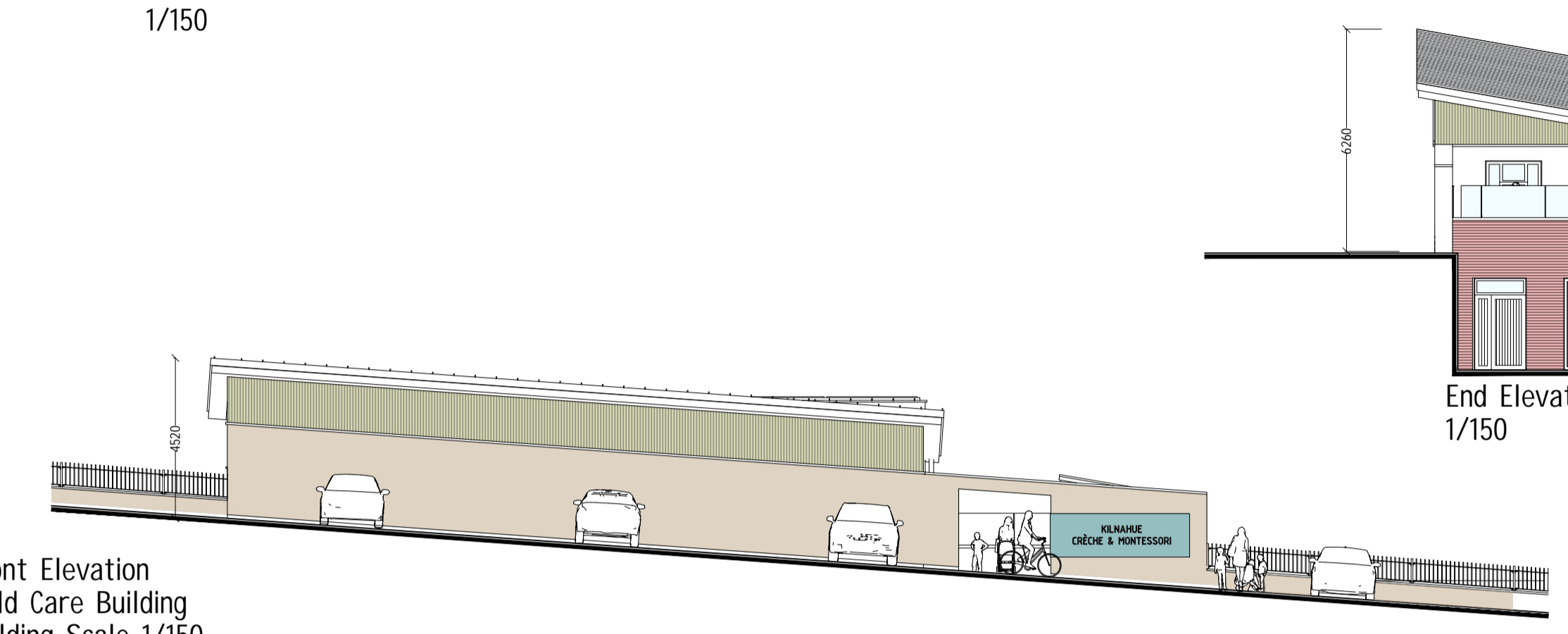
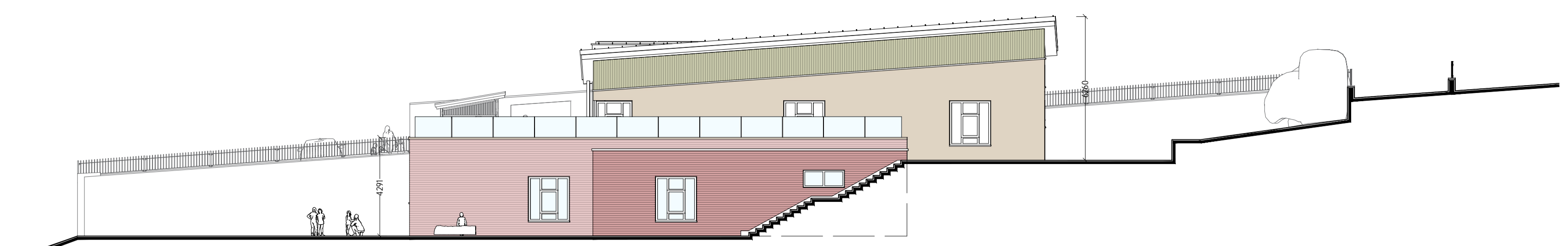
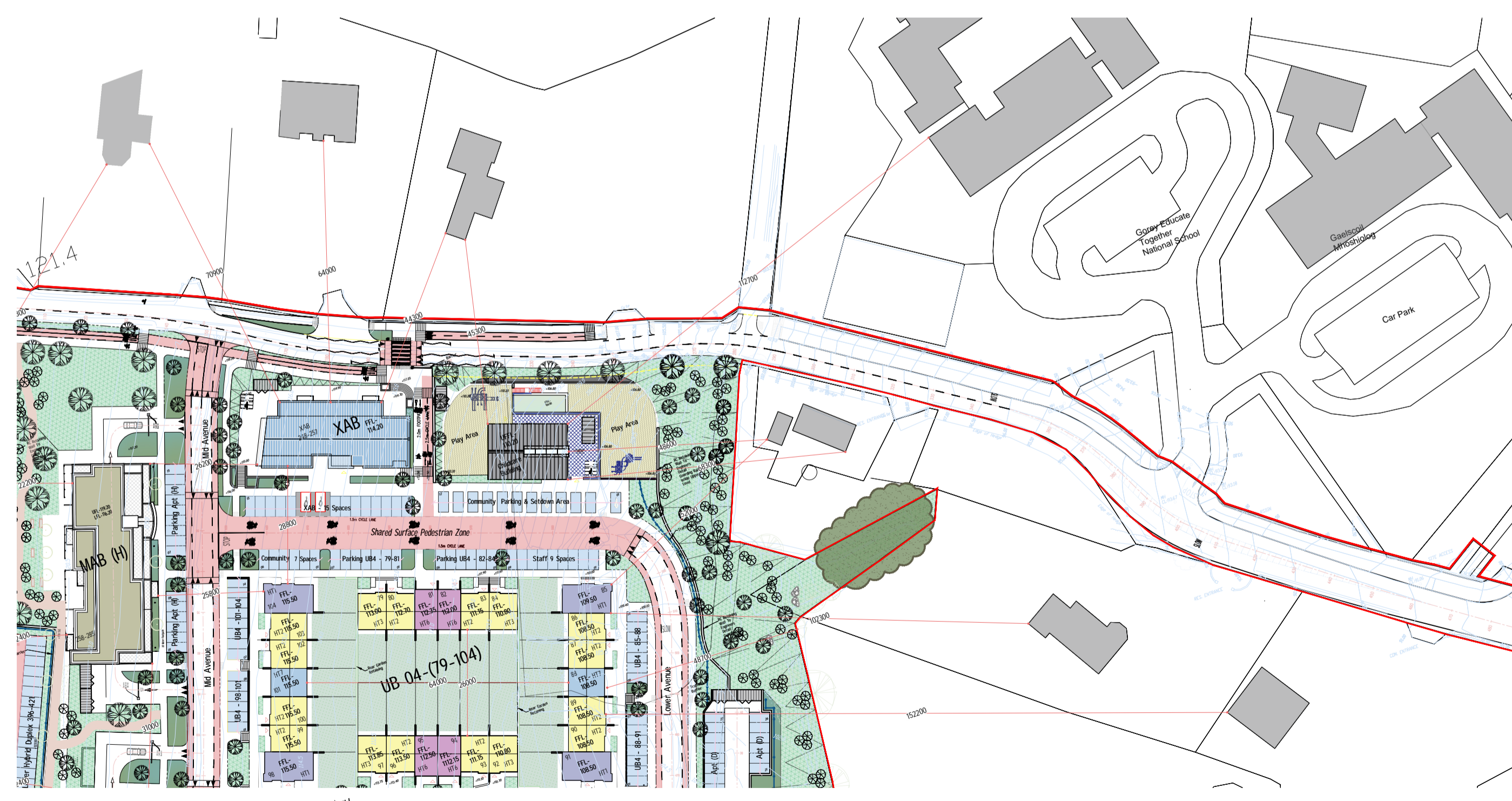
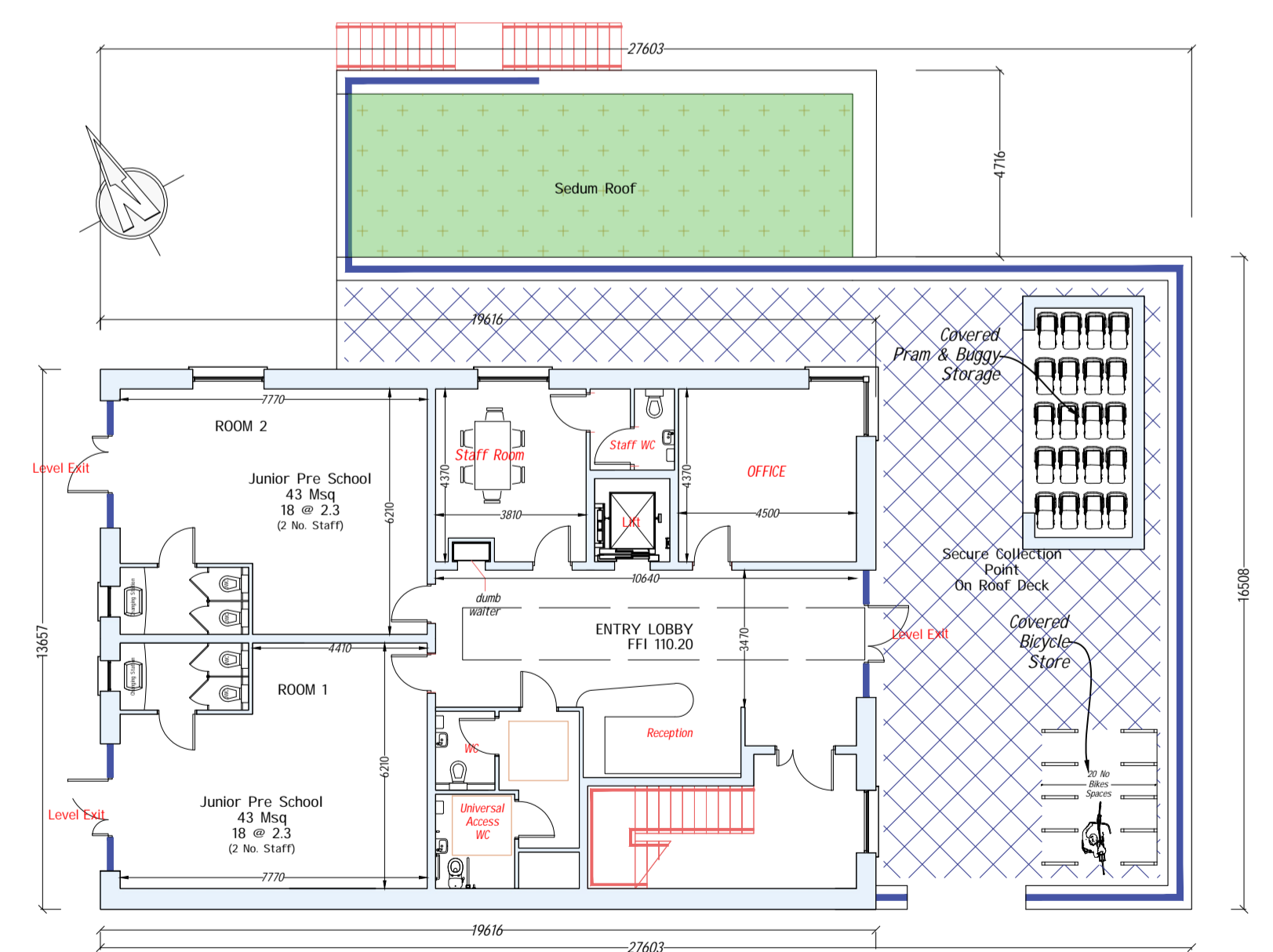
Full-time and part-time services		Sessional services		Drop-in services	
AGE RANGE	ADULT:CHILD RATIO	AGE RANGE	ADULT:CHILD RATIO	AGE RANGE	ADULT:CHILD RATIO
0-1 year	1:3	0-1 year	1:3	0-6 years	1:4
1-2 years	1:5	1-2 years	1:5		
2-3 years	1:6	2-3 years	1:6		
3-6 years	1:8	3-6 years	1:8		

**Environments**  
All services, including occasional must have spaces for children to rest (Regulation 20 (1))  
Full day care services and part time services must provide the following clear floor space as outlined below (Regulation 30 (2))

AGE RANGE	CLEAR FLOOR SPACE
0-1 year	3.7 square metres
1-2 years	2.8 square metres
2-3 years	2.35 square metres
3-6 years	2.3 square metres

A registered provider of any ECCE scheme must provide a minimum of 1.8 sq metres per child (Regulation 30 (3))  
A provider who is providing a sessional pre-school service, a full day care service or a part-time day care service, or both, must provide 1.8 sq metres per child (Regulation 30 (3)).  
A maximum of 22 children should be in any one room at one time (Regulation 30 (6))

All 1/Bed units have been excluded as per DoECLG Childcare Facilities Guidelines Gross Units 421 - 88 = 333
DoECLG Childcare Facilities Guidelines allow up to 75 units requiring a 20-unit childcare facility 333 / 75 = 4.44 X 20 = 88.8 Childcare Places
Proposed Childcare Facility 89 Places



# Kilnahue Childcare Building 421 Units (89 Childcare Places)